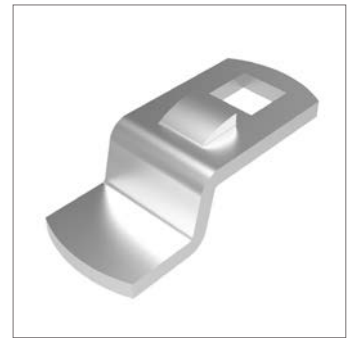
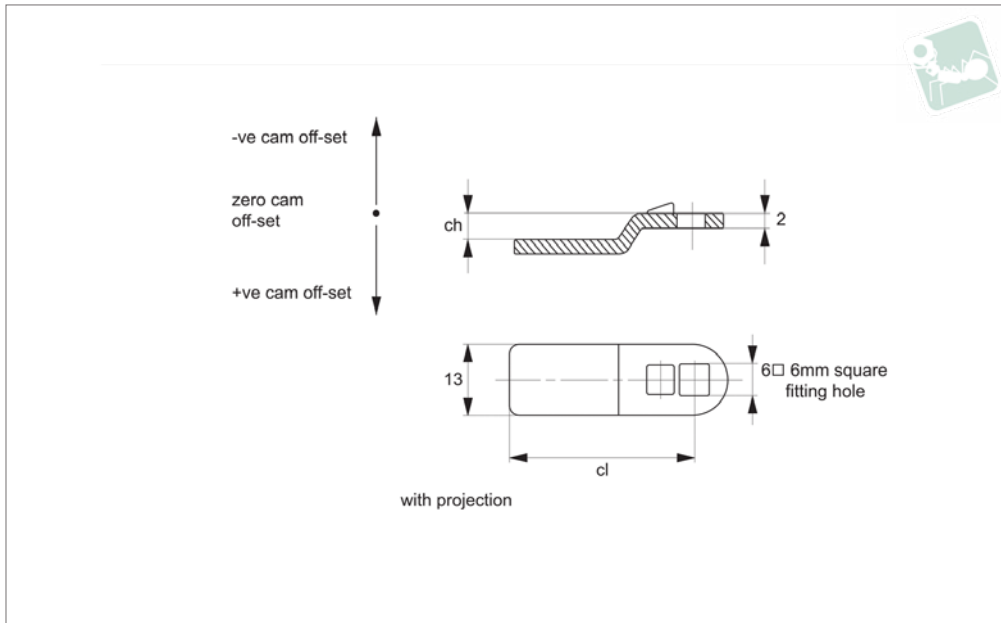




# Single Point Cams - 6 x 6 Sq.

for cam latches CC0500, CC0502 and CC2060

## Latches



**CC0050**

LATCHES

**Material**

Steel, zinc plated.

**Technical Notes**

Use formula to calculate  $ch$  (required cam off-set), and select from product table below;

$ch = h - lh$  where;

$ch$  = required cam off-set/height.

$h$  = grip length (distance between inside of latch face and front of cam).

$lh$  = body length of cam latch/lock to be used (see individual latch/lock product table).

Refer to installation drawing below.

**Important Notes**

With projection type ensures correct location and prevents cam rotating over 45°.

**See cam selection chart for specific latch/lock suitability.**

Sold subject to pack quantity.

Order No.	ch	cl	Where lh = 18	Where lh = 18,5	Where lh = 20	Where lh = 25	Where lh = 30	Where lh = 40	Where lh = 50	Where lh = 60
CC0050.M0200	0	25	h = 18	h = 18.5	h = 20	h = 25	h = 30	h = 40	h = 50	h = 60
CC0050.M0206	6	25	24	24.5	26	31	36	46	56	66
CC0050.M0296	-6	25	12	12.5	14	19	24	34	44	54
CC0050.M0307	7	30	25	25.5	27	32	37	47	57	67

