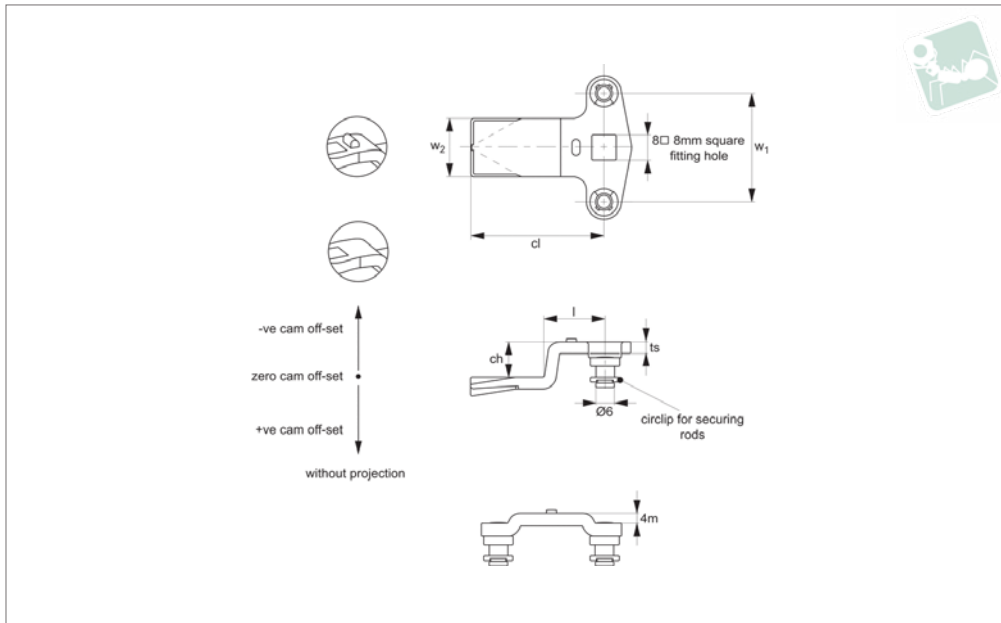




Two Point Cams - Flexi-System

for 3-point latching of cam latches and locks - zinc

Latches



CC0040

LATCHES

Material

Steel, zinc plated.
Size: 8 x 8 Sq.

Technical Notes

Use formula to calculate ch (required cam off-set), and select from product table below;

$ch = h - lh$ where;

ch = required cam off-set/height.

h = grip length (distance between inside of latch face and front of cam).

lh = body length of cam latch/lock to be used (see individual latch/lock product table).

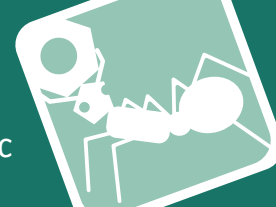
Important Notes

Suitable for Flexi-System latches. „With projection“ type ensures correct location and prevents cam rotating over 45°. **See cam selection chart for specific latch/lock suitability.**

Sold subject to pack quantity.

Order No.	Type	ch	cl	l	ts	w ₁	w ₂
CC0040.M0000	With Projection	0	45	20	4	36	20
CC0040.M0004	With Projection	4	45	20	4	36	20
CC0040.M0008	With Projection	8	45	20	4	36	20
CC0040.M0010	With Projection	10	45	20	4	36	20
CC0040.M0012	With Projection	12	45	20	4	36	20
CC0040.M0014	With Projection	14	45	20	4	36	20
CC0040.M0016	With Projection	16	45	20	4	36	20
CC0040.M0020	With Projection	20	45	20	4	36	20
CC0040.M0022	With Projection	22	45	20	4	36	20
CC0040.M0100	W/o Projection	0	45	20	4	36	20
CC0040.M0104	W/o Projection	4	45	20	4	36	20
CC0040.M0108	W/o Projection	8	45	20	4	36	20
CC0040.M0110	W/o Projection	10	45	20	4	36	20
CC0040.M0120	W/o Projection	12	45	20	4	36	20
CC0040.M0140	W/o Projection	14	45	20	4	36	20
CC0040.M0160	W/o Projection	16	45	20	4	36	20
CC0040.M0200	W/o Projection	20	45	20	4	36	20
CC0040.M0220	W/o Projection	22	45	20	4	36	20

Order No.	Where lh = 18	Where lh = 18,5	Where lh = 20	Where lh = 25	Where lh = 30	Where lh = 40	Where lh = 50	Where lh = 60
	h =	h =	h =	h =	h =	h =	h =	h =
CC0040.M0000	18	18.5	20	25	30	40	50	60
CC0040.M0004	22	22.5	24	29	34	44	54	64
CC0040.M0008	26	26.5	28	33	38	48	58	68
CC0040.M0010	28	28.5	30	35	40	50	60	70
CC0040.M0012	30	30.5	32	37	42	52	62	72
CC0040.M0014	32	32.5	34	39	44	54	64	74
CC0040.M0016	34	34.5	36	41	46	56	66	76
CC0040.M0020	38	38.5	40	45	50	60	70	80
CC0040.M0022	40	40.5	42	47	52	62	72	82



Order No.	Where lh = 18	Where lh = 18,5	Where lh = 20	Where lh = 25	Where lh = 30	Where lh = 40	Where lh = 50	Where lh = 60
	h =	h =	h =	h =	h =	h =	h =	h =
CC0040.M0100	18	18.5	20	25	30	40	50	60
CC0040.M0104	22	22.5	24	29	34	44	54	64
CC0040.M0108	26	26.5	28	33	38	48	58	68
CC0040.M0110	28	28.5	30	35	40	50	60	70
CC0040.M0120	30	30.5	32	37	42	52	62	72
CC0040.M0140	32	32.5	34	39	44	54	64	74
CC0040.M0160	34	34.5	36	41	46	56	66	76
CC0040.M0200	38	38.5	40	45	50	60	70	80
CC0040.M0220	40	40.5	42	47	52	62	72	82



Wixroyd Cam Latches, Locks and Swing Handles

cam selection chart

Cam Latches and Locks

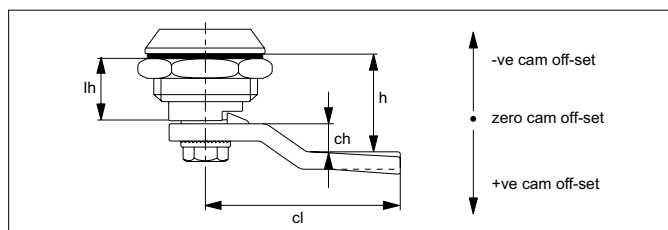
LATCHES

Suitable With Projection Cams				
Compatible cam no.	A0261	A0203	A0210	A0240
	6 x 6 square	8 x 8 square	8 x 8 square	8 x 8 square
Cam fitting hole				
Cam latch / lock no.	A1261 / A1281 / A2390	A2503 / A2504 A2523 / A2528	A2503 / A2504 A2523 / A2528	A2503 / A2504 A2523 / A2528

Suitable Without Projection Cams Table 1				
Compatible cam no.	A0203	A0210	A0240	A0243
	8 x 8 square	8 x 8 square	8 x 8 square	8 x 8 square
Cam fitting hole				
Cam latch / lock no.	A1003 / A1021 / A1103 A1161 / A1168 / A1181 A1203 / A1210 / A1251 A1601 / A1620 / A1801 A2001 / A2203 / A2326 A2333 / A2392 / A2526 A4221 / A4241 / A4260 B1082 / B1086 / B1088 B1091 / B1092 / B1180 B1281 / B1285 / B1380 B1450 / B2091 / B2181	A1003 / A1021 / A1103 A1161 / A1168 / A1181 A1203 / A1210 / A1251 A1601 / A1620 / A1801 A2001 / A2203 / A2326 A2333 / A2392 / A2526 A4221 / A4241 / A4260 B1082 / B1086 / B1088 B1091 / B1092 / B1180 B1281 / B1285 / B1380 B1450 / B2091 / B2181	A1003 / A1021 / A1103 A1161 / A1168 / A1181 A1203 / A1210 / A1251 A1601 / A1620 / A1801 A2001 / A2203 / A2326 A2333 / A2392 / A2526 A4221 / A4241 / A4260 B1082 / B1086 / B1088 B1091 / B1092 / B1180 B1281 / B1285 / B1380 B1450 / B2091 / B2181	A1003 / A1021 / A1103 A1161 / A1168 / A1181 A1203 / A1210 / A1251 A1601 / A1620 / A1801 A2001 / A2203 / A2326 A2333 / A2392 / A2526 A4221 / A4241 / A4260 B1082 / B1086 / B1088 B1091 / B1092 / B1180 B1281 / B1285 / B1380 B1450 / B2091 / B2181

Suitable Without Projection Cams Table 2					
Compatible cam no.	A0250	A0234	A0215	A0231	A0233
	5 x 5 square	6,3 dia. x 4,9	7 x 7 square	8 x 10 dia.	8 x 10 dia.
Cam fitting hole					
Cam latch / lock no.	A4600 / A4620	A1661 / A1667	B2082 / B2084 / B2086 B2088 / B2285 / B2380	A1603 / A1611 A1630 / A1810	A1603 / A1611 A1630 / A1810

Calculation of correct cam off-set



Cam off-set

Use the formula to calculate your correct cam off-set:

$$ch = h - lh$$

ch = the required cam off-set.

h = distance between inside of lock face and front of cam (also referred to as "grip length").

lh = length of cam body to be used (refer to individual cam body data sheets).

Cam Off-Set (dimension ch)

To ensure your cam fully and correctly engages with the frame of your door the correct cam off-set must be selected. A cam off-set can be either negative (-ve) or positive (+ve).

Cam Length (dimension cl)

Impacts reach of the cam to door frame and hence impacts positioning of cam body for installation. Cam length or reach is measured from the centre of the cam fixing hole to the cam's leading edge. Refer to individual cam body datasheets.